

# Netac Encryption and Backup Tool

## User Instruction

V1.1.2.1

Netac Technology Co., Ltd.

[www.netac.com](http://www.netac.com)

## 1. Applicable platform

For Netac portable hard drives and USB flash drive only


## 2. Function brief

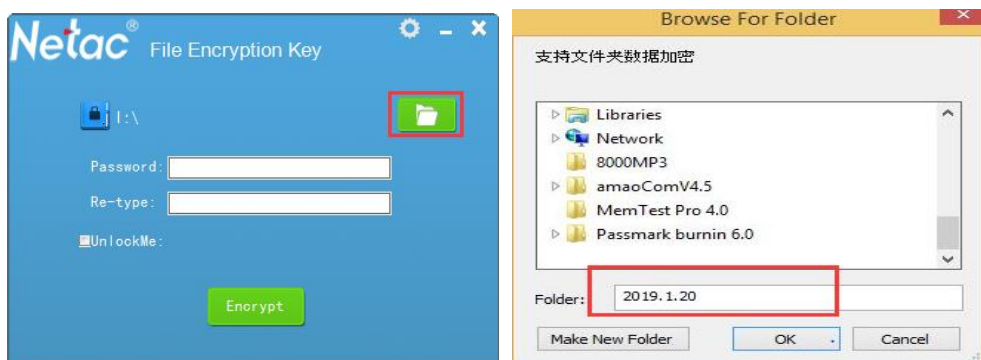
Netac encryption software is only effective for the file folders inside the disk. This software can only be run in the root directory of Netac storage products, non-Netac products or local disk can not run this software.

This software provides two kinds of security (normal and medium) encryption methods, users can choose the strength of encryption according to the security level of the files for encryption.

## 3. Instructions

### 1. Double click NetacLockFile to run.


2. Click the button  , and choose the disk/folder which you plan to encrypt.

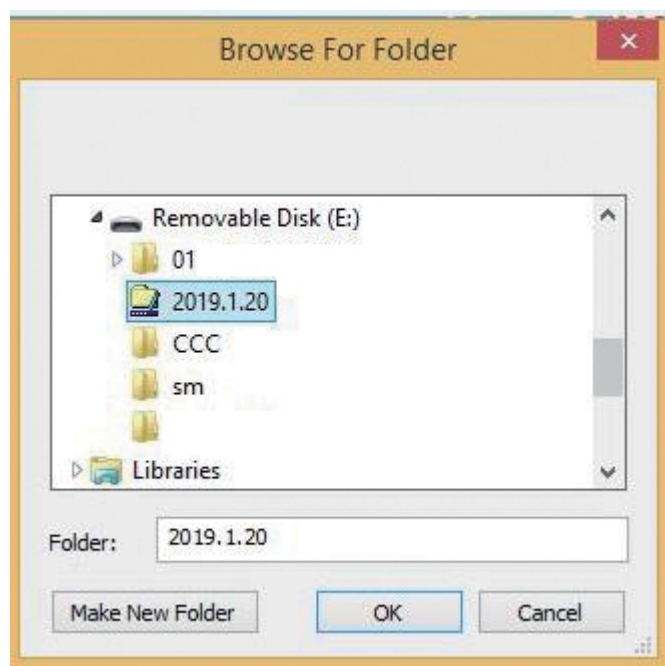


In the “Password” and “Retype” box input the password(Length 4-12 digits, the two inputs must be the same), then left-click “Encrypt” button.



### 3. Decryption

Run the software, click  button, choose the file path you want to decrypt, the interface will jump to the decryption window automatically.




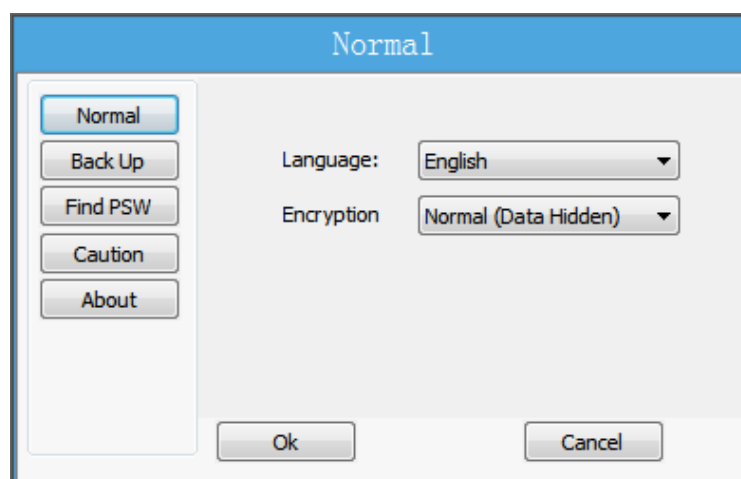
Input correct password and click “Dycrpt” button.



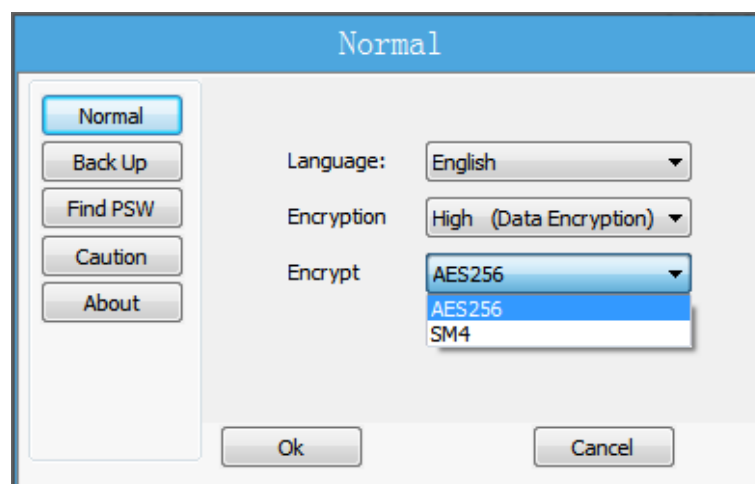
### 4. Encryption strength setting

You can set the encryption strength for encrypting the disk/folder, this setting should be done before encryption setting.

**Method:** Click  and click “Normal” button, at “encryption Strength” box select the strength level Normal (Data hidden) and High (Data encryption). The software’s default level is “Normal”.



Select High (Data encryption), there are two different encryption algorithms AES256 and SM4.



## 5, Password protection and retrieve

### Password protection

This software is available for setting password protection questions before encryption. This helps you to retrieve the password if it's forgotten.


**Method:** Before clicking “Encrypt” button, tick “UnlockMe”, several questions will pop out for you to choose, input answer for the question you choose and click “Encrypt”(Please be sure to keep in mind the question and answer).

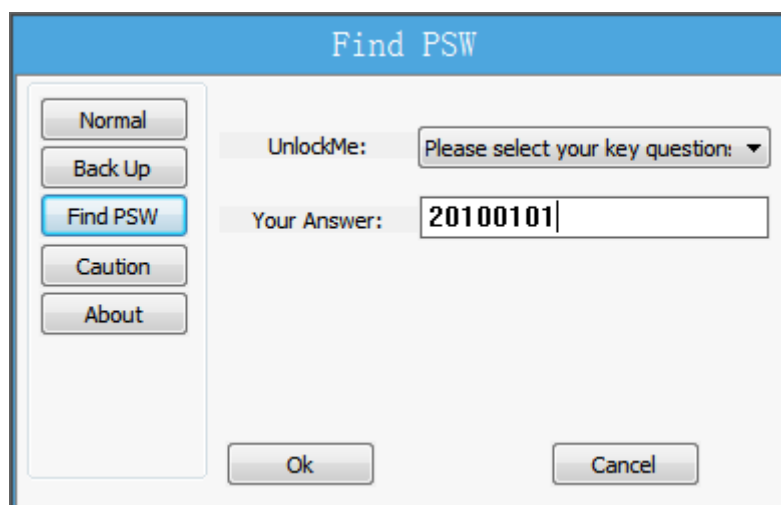


e.g.: Choose question: What day is your birthday  
 Answer: 20100101

### Retrieve Password

When you forget the password, you can retrieve the password through the protection question and answer.

**Method:** Click  at the top right corner of the interface, click “Find PSW” button, choose the protection question and input the right answer, then the software will show you the right password.




e.g. Question: What day is your birthday  
Answer: 20100101

You will see below



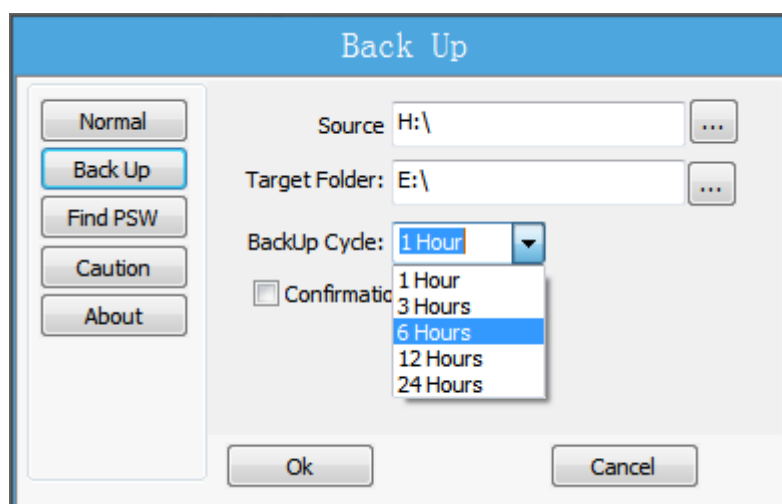
## 4. Other instructions

### 1, Back-Up


Click  at the top right corner of the interface, Click "Back up" to back up the file folders

#### Method:

Select the source folder and target folder, and choose the BackUp Cycle you prefer and tick "confirmation" to realize the back-up function.




## 2, Caution

Click  at the top right corner of the interface, choose “Caution” to check the details.



## 3, About

4, Click  at the top right corner of the interface, choose “About” to check the details.

**About** – Mainly about the software version and copyrights.



## 5. Matters need attention

- 1) This software can only encrypt the file of which the size is smaller than 4GB.
- 2) This software can not be closed and the external HDD can not be pulled out forcedly during encryption or back up.
- 3) This software can only be used in Netac products.